

Emerging Adults Strategy: A Specialized Approach to a High Risk Population

Arnold Patrick
Faustino Lopez
Amanda Perez
Daniela Villalobos
Hidalgo County CSCD

Judge Roberto Flores
Rosie Montelongo
Jay Vela
Gabriela Ontiveros

Jennifer Lerch
George Mason University



Hidalgo County CSCD



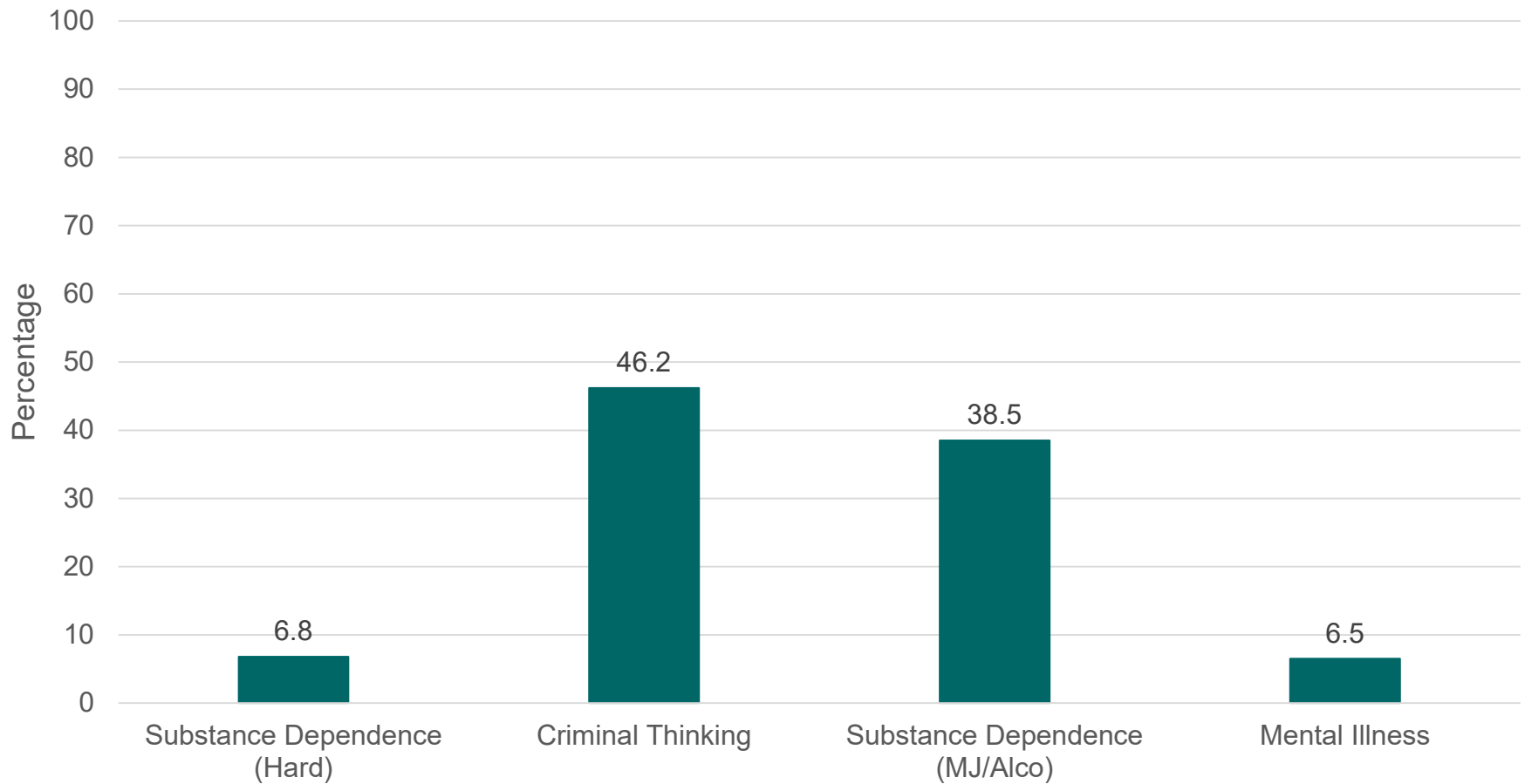
- ~10,000 supervised under community supervision for misdemeanor and felony offenses
 - Sixth largest probation agency in Texas
- 143 probation officers
 - 110:1 offender to probation officer ratio
- Revocations (returns to incarceration)
 - 21% in one year (2015)
- Revocations for 18-25 year olds
 - 46% in one year (2015)

Snapshot of Clients 18-25 Years Old

- 9,377 initial clients entered
- Mean/median age: 22/22

Initial Assessments	
Gender	
Male	78%
Female	22%
Risk Level	
Administrative	1%
Very Low	9%
Low	16%
Moderate	51%
High	21%
Very High	2%
Race/Ethnicity	
Hispanic/Latino	96.1%
African American	.5%
Caucasian	2.7%
Multiracial	.2%
Native American	.2%
Asian/Hawaiian/Pacific Isl.	.2%
Other	.1%

Criminogenic and Clinical Needs



Program Target

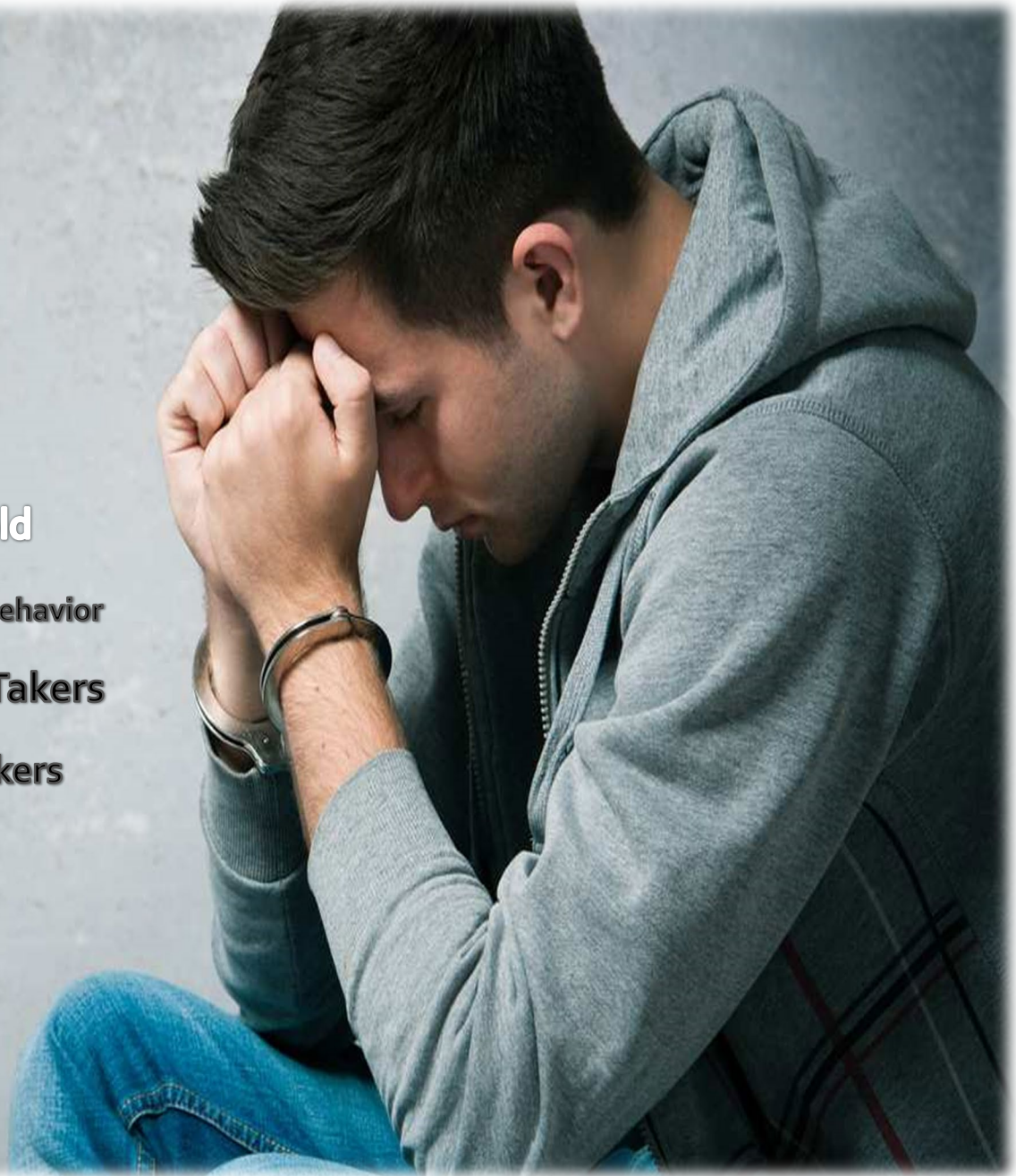
18-25 years old

*** Heightened Impulse Behavior**

*** Risk Takers**

*** Poor Decision makers**

*** Moderate to high risk**



We use a validating assessment tool to guide supervision decision and tailor in young adults



TRAS

Providing young adults with cognitive behavioral programs and address criminal thinking and behaviors



Thinking for a Change



Fostering sustained connections to prosocial peers and adults to strengthen engagement in programming



Recovery Support Services

Program Assistance



Transportation Services

About our Program

- Post-conviction, voluntary program
- 6-18 month program
 - 12 month minimum for felony cases
 - 6 month minimum for misdemeanor cases
- Includes cognitive behavioral treatment such as Decision Points, substance abuse treatment (if needed), specialty court, probation officer meetings, and incentives/sanctions.



The Structure of the Program



HCEAS in Action

- Video

Phases:

Phase I

Min. of 15 weeks

- Preliminary Recovery Phase
- Participants enroll and participate in an Intensive Substance Abuse Outpatient Treatment Program

Phase II

Min. of 15 weeks

- Behavioral Adjustment Phase
- Individuals will participate in either Thinking for A Change curriculum or Decision Points Curriculum

Phase III

Min. of 8 weeks

- Maintenance and Support phase
- Participants continue attending peer support including educational and vocational services.

Phase IV

Min. of 8 weeks

- Transitional Phase
- Monthly court appearance and continued monthly session with Case worker.
- Consideration of early termination of supervision or transfer case to Reduce Risk Caseload

Program Incentives



**Reduction
in Fees**

\$10.00 off in
Probation fees
With completion of
Outpatient Treatment

\$5.00 off in fees
with Completion of
Decision Points

\$5.00 off in fees
with Completion
of Recovery
Support Services

\$5.00 off in Probation
fees
With completion of
Journals

Gift Cards to
Restaurants

Gift Card to
Place of Choice

GED Testing
Fees
reimbursed

Incentives Schedule

H.C. Emerging Adult Strategy Incentives

Outpatient Treatment completion	Reduce probation fees by \$10.00
Completion of Phase I – Advance to Phase II	\$25.00 gift card – Letter of Recognition from Judge
Decision Points completion	Reduce probation fees by \$5.00
Completion of Phase II – Advance to Phase III	\$25.00 gift card – Letter of Recognition from Judge
Recovery Support Service's completion	Reduce probation fees by \$5.00
Journal(s) completion	Reduce probation fees by \$5.00
Completion of Phase III – Advance to Phase IV	\$25.00 gift card – Letter of Recognition from Judge
GED Completion while in program	Gift card reimbursement on testing fees
10 Negative UA'S	\$10.00 Gift Card to Fast Food Restaurant of Choice
Program Completion	Certificate from Judge – Consider Early Termination if Applicable or Reduced Risk Caseload

Incentives Example



Sample
5 year Probation
Case
With GED option.

Hidalgo County Emerging Adult Strategy Program

Incentives

Name: Sample Participant

Cause #: CR12345 A

- Participation in the program will allow participants to qualify for the following incentives:
 - Reduction of \$10.00 in probation fees with completion of Outpatient Treatment or 4 consecutive months of clean UA's. (ex. \$10 x 60 months = saving \$ 600).
 - Reduction of \$5.00 in probation fees with completion of Decision Points (ex. \$5 x 60 months = saving \$ 300).
 - Reduction of \$5.00 in probation fees with completion of Recovery Support Services (ex. \$5 x 60 months = saving \$ 300).
 - Reduction of \$5.00 in probation fees with completion of Journals (ex. \$5.00 x 60 months = saving \$ 300).
 - \$25.00 gift card to place of choice after the completion of each Phase (I, II, and III)
total of \$75 in gift cards
 - GED testing fees reimbursed to participate while enrolled in HCEAS program
approximately \$145 gift card
 - \$10.00 gift card to Fast Food Restaurant of choice after 10 consecutive negative urine analysis **approximately \$30 in gift cards**
 - at completion of program participate to be considered for Early Termination (if applicable) or placement on Reduce Risk caseload
- The program will require a minimum of twelve (12) months and a maximum of eighteen (18) months participation. All participants will be under the supervision of HCEAS for no less than twelve (12) months, unless approved by the Court.

Possible Savings HCEAS Participant	\$ <u>1,500.00</u>
Possible Incentives	\$ <u>105.00</u>
GED reimbursement	\$ <u>145.00</u>
Total <u>Participant Savings</u> →	\$ <u>1,750.00</u>

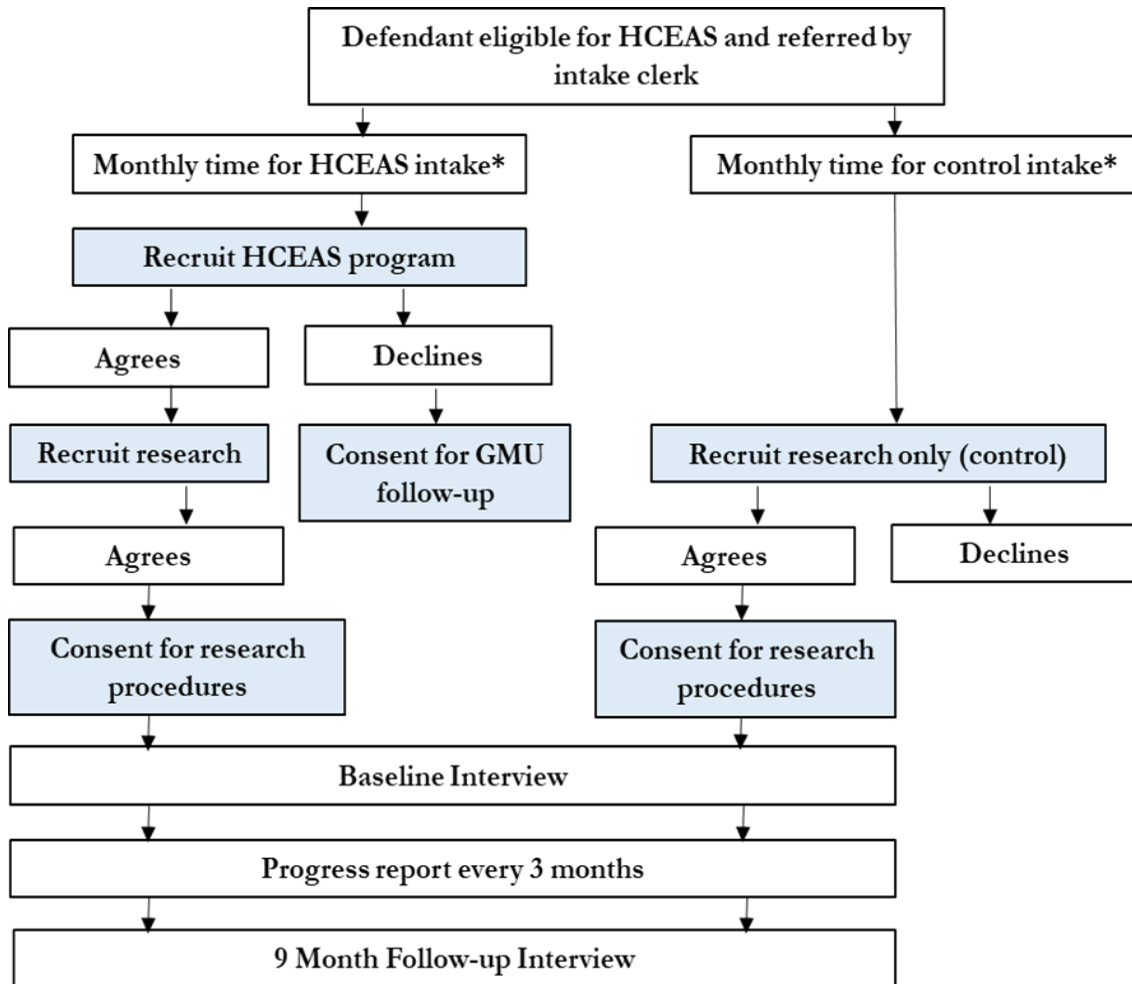
Sanctions vary by Phase

Phase I Sanctions / Interventions	
1 st (+) UA / Missed UA	Admonishment by CSO & Dec. Grid / Behavioral Offense Chain on drug/alcohol use
(+) UA / Missed UA after 1 st Violation	3 days county jail or AIP House Arrest
Failure to Appear to COURT STATUS	Verbal admonishment by Supervisor /Court & Behavioral Offense Chain /Dec. Grid
Failure to Appear to COURT STATUS after 1 st Violation	3 days county jail & Behavioral Offense Chain
Failure to Report to OUTPATIENT TREATMENT	Verbal admonishment by Supervisor
Failure to Report to OUTPATIENT TREATMENT after 2 nd Consecutive Failure to Report	3 days county jail or AIP House Arrest
Failure to Appear to OFFICE VISIT	Admonishment by CSO
Failure to Appear to OFFICE VISIT after 1 st Violation	Verbal admonishment by Supervisor and written letter to CSO with explanation of absence & Behavioral Offense Chain
Subsequent ARREST	Removal from program
CURFEW violation	Verbal admonishment by the Court
CURFEW violation after 1 st Violation	AIP House Arrest for 30 days

Evaluation Questions

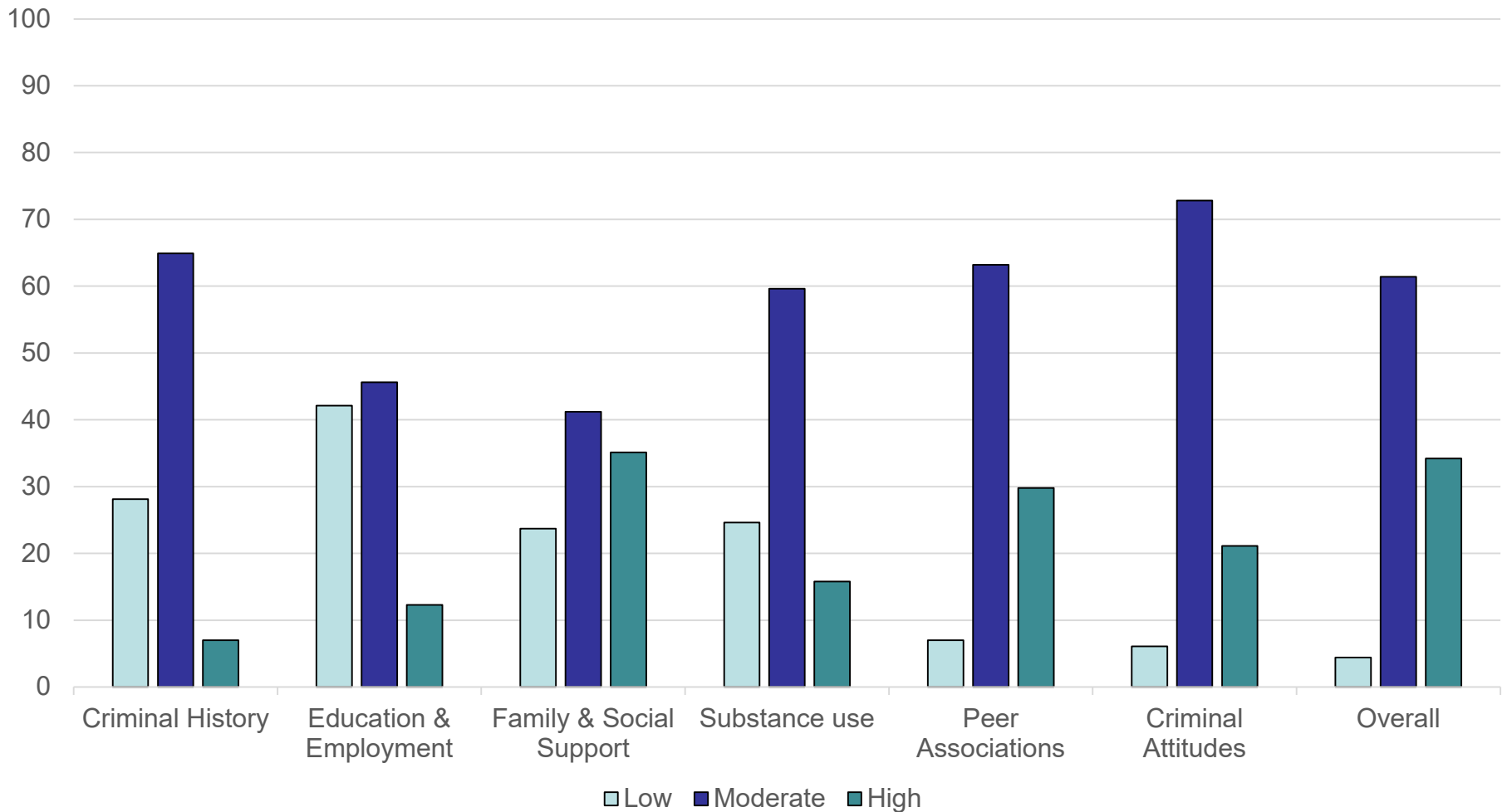
- Is recidivism less for HCEAS participants compared to non-HCEAS participants?
- How does HCEAS impact defendants' stability on such factors as employment and education during community supervision involvement?
- Do HCEAS participants reduce their substance use compared to non-HCEAS participants?
- How does HCEAS participation impact defendants' psychosocial measures such as impulsivity and ability to regulate emotions?

Evaluation Overview



*Until the randomized date, recruit control participants. After randomized day, HCEAS participants recruited until 7 slots filled or end of the month. Even if HCEAS slots left to fill at the end of the month, only restart recruiting HCEAS slots the next month on the randomized date.

Year 1 Participants (n=114)



Evaluation Next Steps

- Examine year one outcomes (e.g., revocations)
 - Propensity score matching
- Continue recruiting clients into the RCT and collecting data
 - Recruited 29 HCEAS participants and 41 control participants

For more information about our program,
contact:

Faustino Lopez

Assistant Director

Faustino.lopez@hidalgocountycscd.org

956-587-6000

